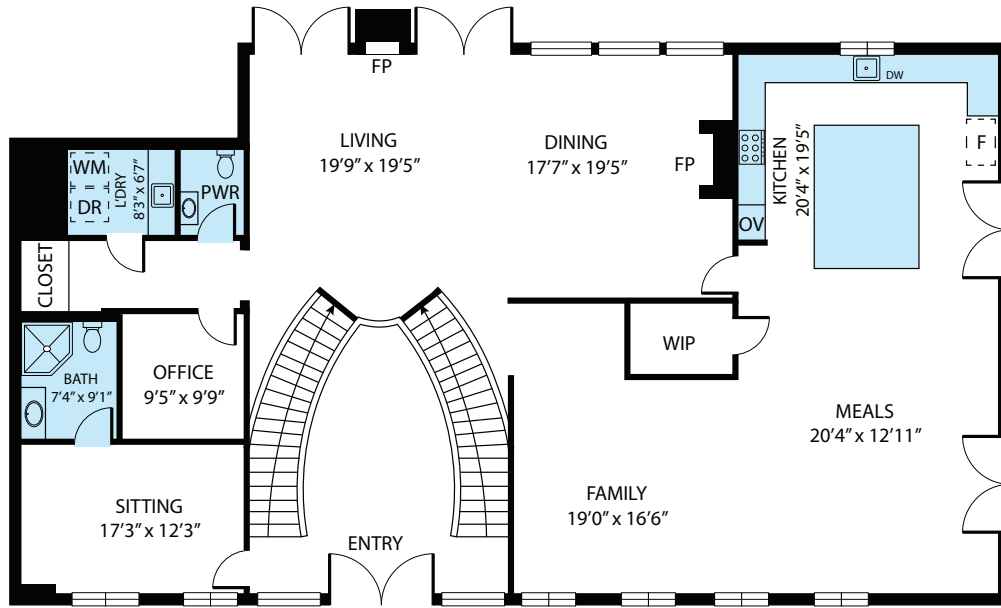
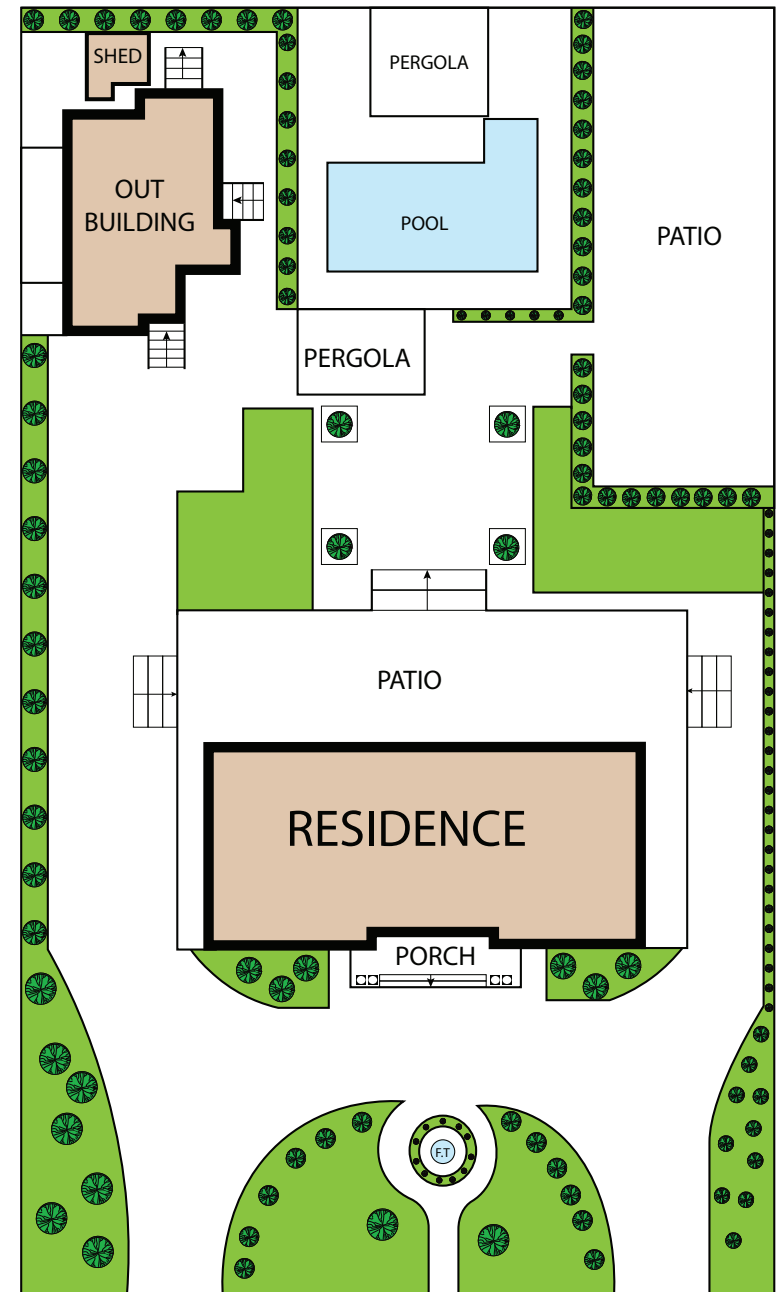


2ND FLOOR



FIRST FLOOR



16805 Rayen Street, Northridge 91343

TOTAL APPROX. HEATED AREA 5,600 SQ.FT

Whilst every attempt has been made to ensure the accuracy of the floor plan contained here, measurements of doors, windows, rooms and any other items are approximate and no responsibility is taken for any error, omission, or misstatement. This plan is for illustrative purposes only and should be used as such by any prospective purchaser.



LA360VR

